



Hog Heaven® Modular Tiles

vs.

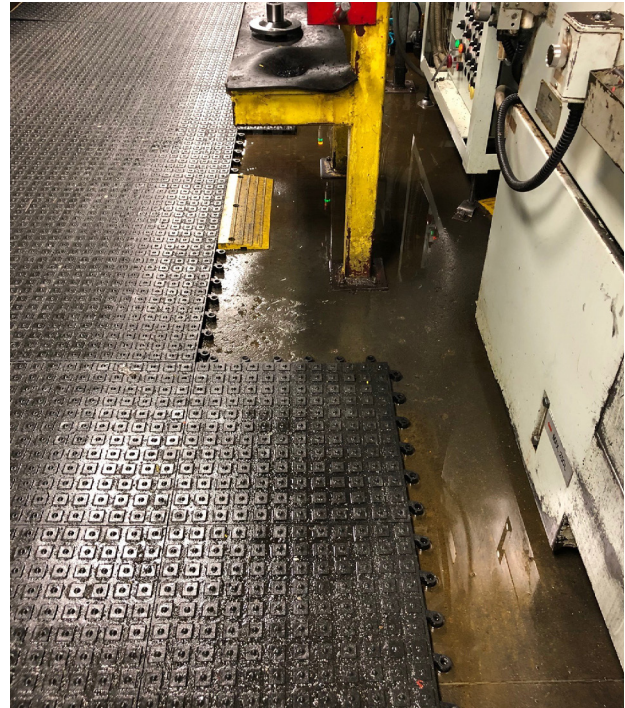
Ergonomic PVC Tiles

Durable nitrile rubber	Material	PVC
3/4"	Thickness	7/8"
42.3% @ 20 psi; 56.8% @ 40 psi	Compression Deflection	14.15%
Electrically Conductive 9.4 x 10 ⁵ ohms	ESD Rating	No rating
Yes	Chemical/Oil Resistant	Far less resistant than nitrile
0.74 Dry, 0.77 Wet per ASTM C1028-96	Coefficient of Friction	0.65 Dry, 0.42 Wet per ASTM F1677
Yes	Welding Safe	No
Yes, nitrile/PVC blended cushion	Cushion Backing	No

Do your PVC tiles look like this?



PVC tiles are prone to curling at the edges which can create tripping hazards.



PVC tiles are slippery when wet, and the lack of beveled edges/transitions can create tripping hazards.